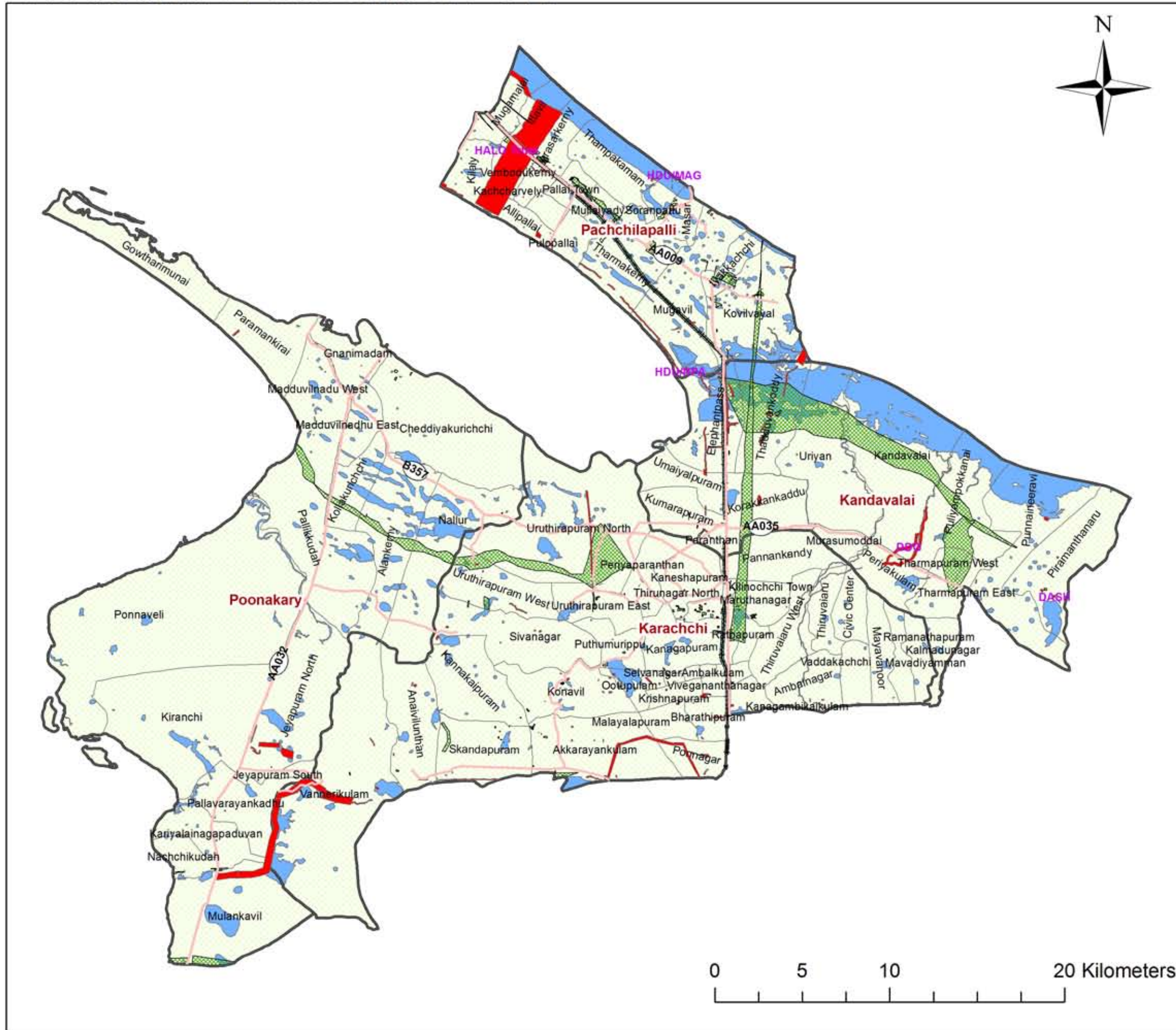


# De-Mining Status - Killinochchi District As at end of December 2011



Estimated suspected area as contaminated in M2	1,348,603,861
Safe area identified from estimated suspected areas	753,117,190
Confirmed Hazardous Areas (CHA) in M2	596,984,525
Areas released by NTS in M2	544,585,539
Areas cleared by MF, BAC, Mech.v September 2011 in M3	28,442,537
<b>Total Cleared Areas in M2</b>	<b>573,028,076</b>
<b>Areas to be cleared in M2</b>	<b>23,956,449</b>

**Legend**

**DE-MINING STATUS**

- Mine Fields
- MF Cleared
- BAC / Survey Cleared
- Main Road
- Minor Road
- Railway
- Water Bodies(Tank)
- GN Boundary
- DS Boundary