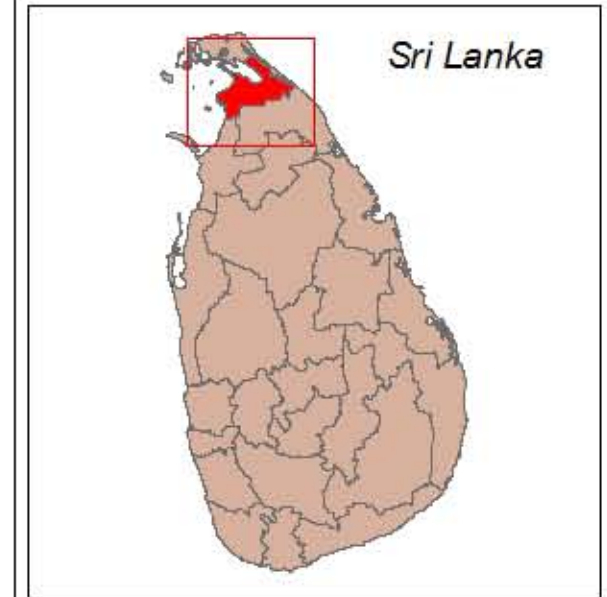
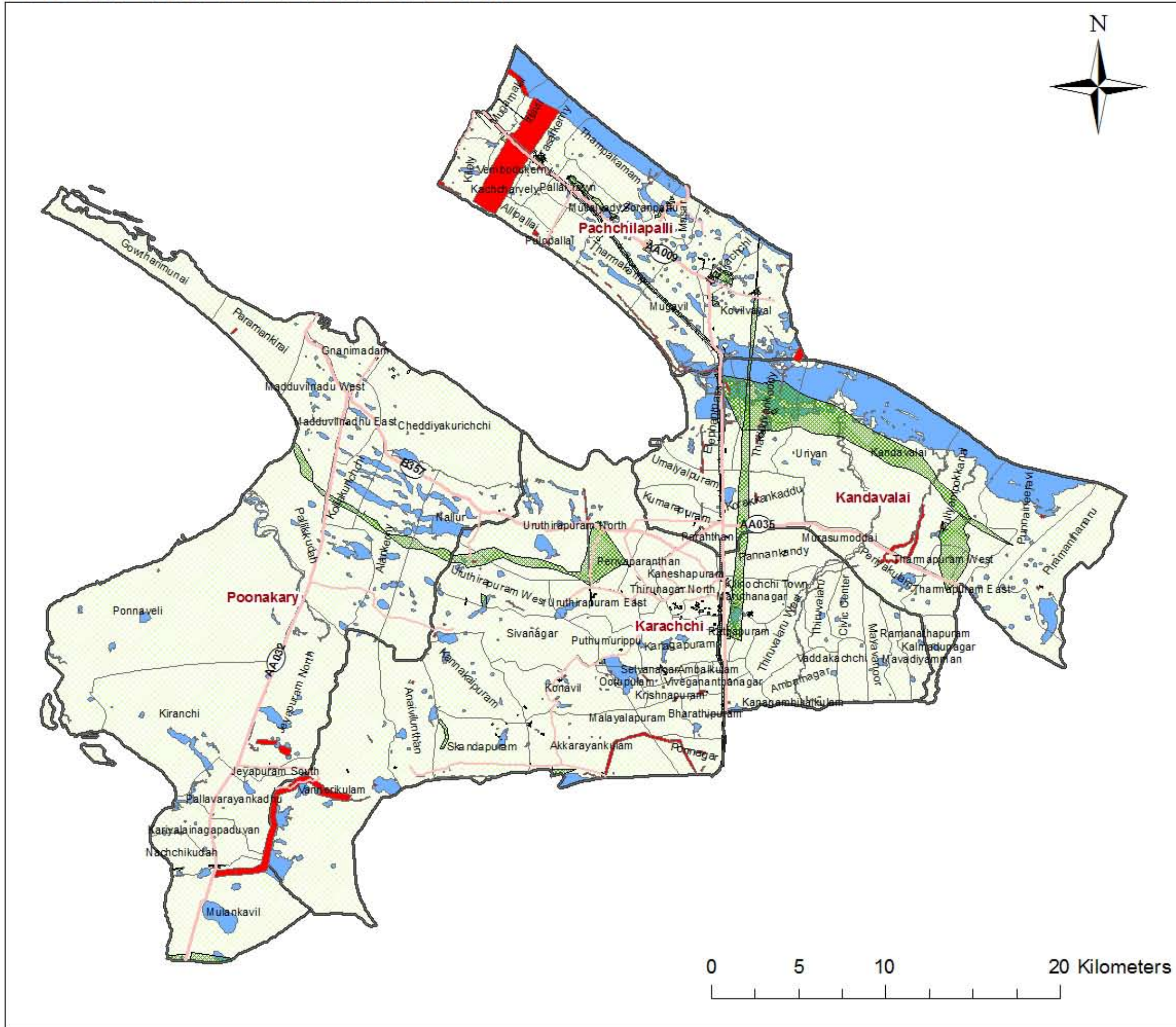


De-Mining Status - Killinochchi District As at end of October 2011



Estimated suspected area as contaminated in M2	1,348,603,861
Safe area identified from estimated suspected areas	753,570,528
Confirmed Hazardous Areas (CHA) in M2	595,033,333
Areas released by NTS in M2	544,585,539
Areas cleared by MF, BAC, Mech.v September 2011 in M3	26,944,683
Total Cleared Areas in M2	571,530,222
Areas to be cleared in M2	23,503,111

Legend

DE-MINING STATUS

- Mine Fields
- MF Cleared
- BAC / Survey Cleared
- Main Road
- Minor Road
- Railway
- Water Bodies(Tank)
- GN Boundary
- DS Boundary