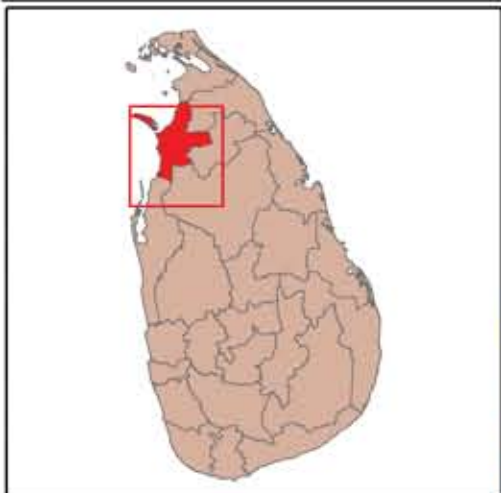
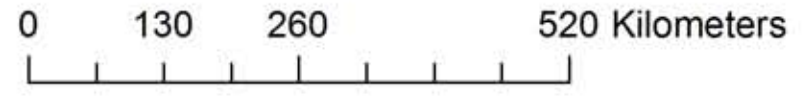
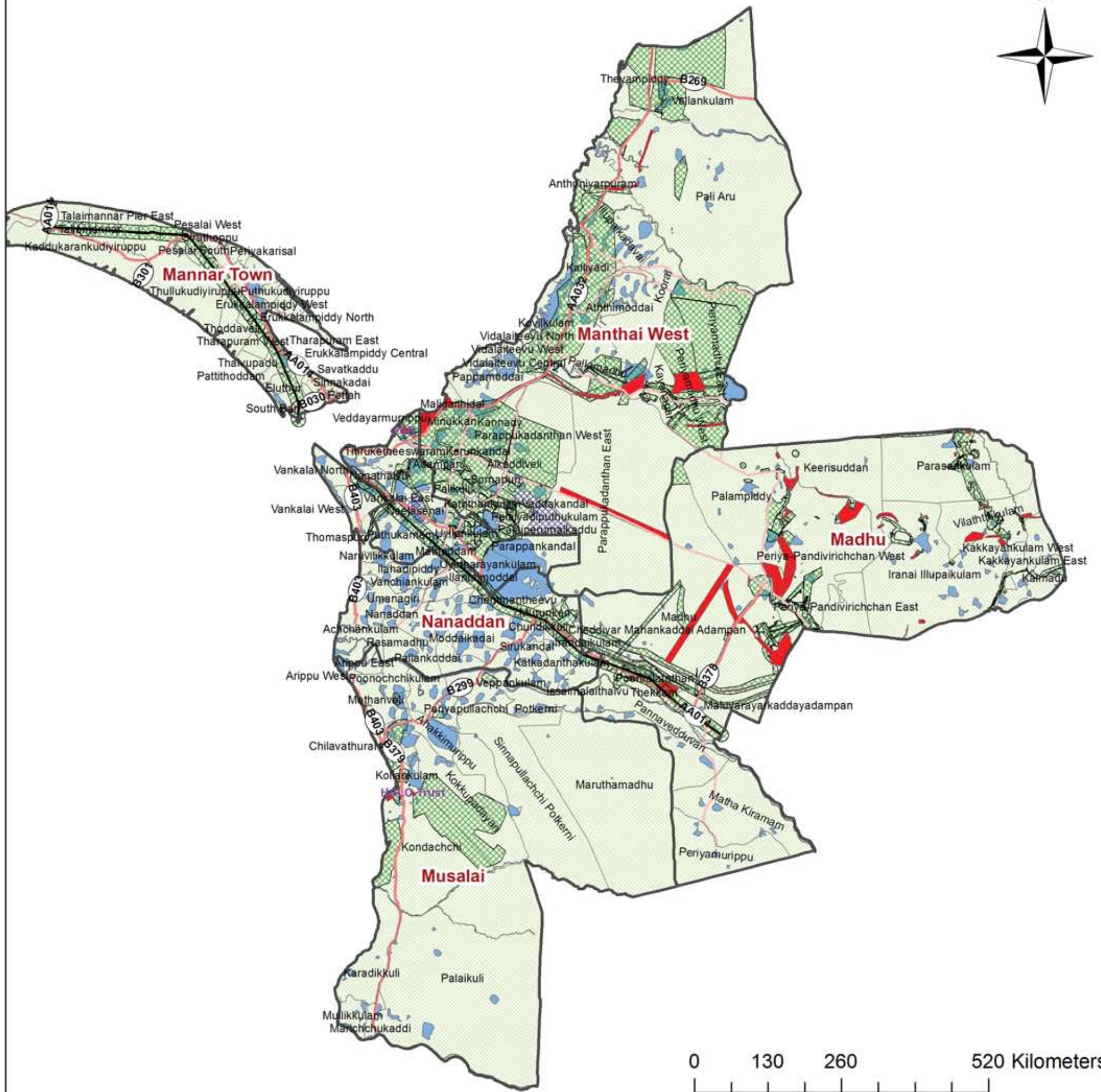


# DE- Mining Status- Mannar District As at end of December 2011



Estimated suspected area as contaminated in M2	1,164,014,721
Safe area identified from estimated suspected areas	842,225,436
Confirmed Hazardous Areas (CHA) in M2	321,789,285
Areas released by NTS in M2	92,218,304
Areas cleared by MF, BAC, Mech.v September 2011 in M3	194,392,858
Total Cleared Areas in M2	286,611,162
Areas to be cleared in M2	35,178,123

**Legend**

**DE-MINING STATUS**

- Mine Field Cleared
- BAC/Survey Cleared
- Area Suspected as Mines and UXOs Contaminated
- Mine Fields
- Railway
- Minor\_Road
- Main\_Road
- Water Bodies
- GN Boundary
- DS Boundary